

FRONT RANGE SKI MOUNTAINEERING

(beta site - backcountry skiing and ski mountaineering on the Front Range of Colorado)

- [Main](#)
- [Warning](#)
- [About](#)
- [Medicine Bow Mountains](#)
- [Never Summer Mountains](#)
- [Indian Peaks Wilderness](#)
- [James Peak Wilderness](#)
- [Interstate 70 North](#)
- [Interstate 70 South](#)
- [Winter Backcountry Skiing](#)
- [Blog](#)

Kelso Mountain 13,164'



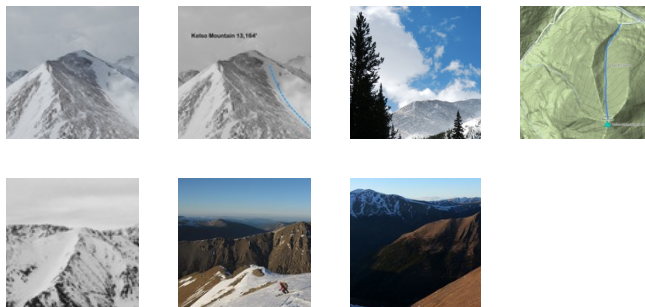
Kelso Mountain from the north. Photo: Rob Writz

Kelso Mountain is the gateway to the Stevens Gulch and Grizzly Gulch ski mountaineering arena. Kelso is positioned in the middle of these two major gulches and the summit provides climbers and skiers with stunning views that will provide inspiration for future adventures. The North Gully on Kelso is one of the more frequently skied routes on the Front Range. This peak is positioned close to Interstate 70 and the approach can be quick, but be prepared for a big climb of over 2,000 feet to the summit! The north side of Kelso including the North Gully is on private land, but access in the winter and spring has not been an issue to date.

+ ROUTES

+ TRAILHEAD

+ MAPS & PICTURES



Clicking on map above will open interactive Google map website



Alpinismo LLC © 2017